

# CAT G3512 POWER MODULE

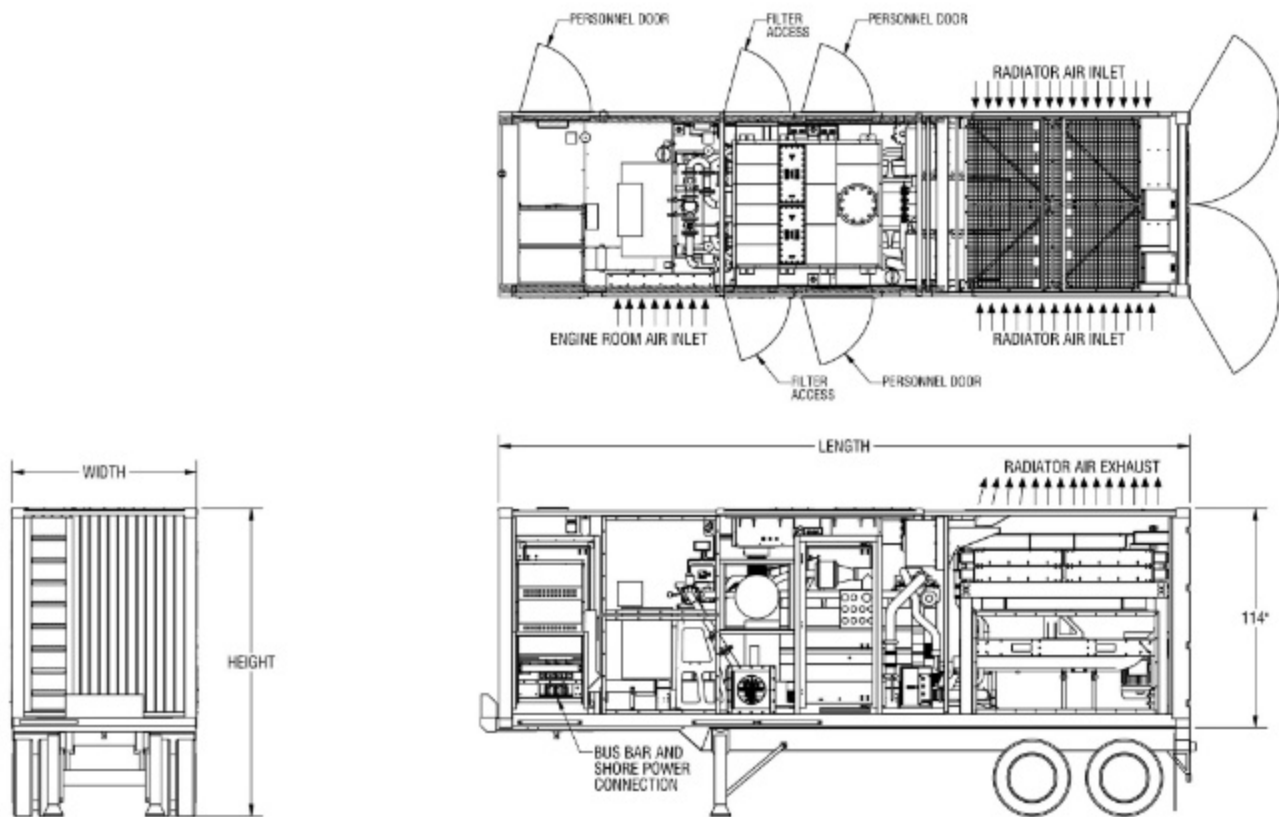


The 30' Z-CUBE power module by Girtz is a world class ISO container based electrical generating system. Powered by a natural gas Caterpillar G3512, it offers the perfect balance of serviceability, dependability, and technology in today's cost effective natural gas power applications.

## Standard Features

- Caterpillar G3512 Genset - 480V, 60HZ, 555 kW
- Low pressure natural gas (2.5 PSIG Nominal)
- 1200 RPM Continuous rated engine
- 118 F Ambient horizontal radiator @1000 ft elevation
- EMCP II genset controller
- Z-POWER utility grade paralleling switchgear
- 1200 amp molded case breaker
- Side and bottom bus bar connection
- Schweitzer protective relay
- Electric generator room cooling fans
- Load sharing and paralleling communication wired to bus bar connection area
- LED AC and sealed beam DC lights
- 120/240 single phase shore power load distribution panel
- Battery disconnect and 20A charger
- Critical grade three way catalyst silencer with fuel / air ratio control
- Silencer and catalysts removable through roof
- 3" Class 150 ANSI flange gas connection
- Enclosure paint rating C4 per ISO 12944-2
- Five step portable aluminum ladder and ladder storage
- Diamond plate aluminum floor treatment
- Engine fluid spill pan with drains
- 4" insulation with sound attenuated louvers

# CAT G3512 POWER MODULE



## Dimensions

Length	Width	Height	Weight (Wet)	Fuel Connection
360 in	96 in	160 in	45,150 lbs	3" Class 150 Flange (ANSI B16.5)

All dimensions and weights are approximate and chassis inclusive.

## Specifications

Generator Model	ekW Rating	Sound Level dB(A) @ 7m		Fuel Consumption (BTU/bph-hr)		
		No Load	100% Load	Continuous		
	Continuous			100% load	75% load	50% load
CAT G3512	555	TBD	TBD	7821	8254	8993